

Electrical Specifications

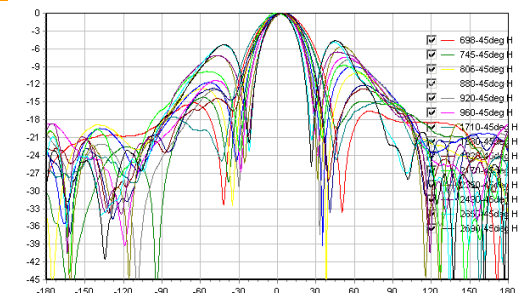
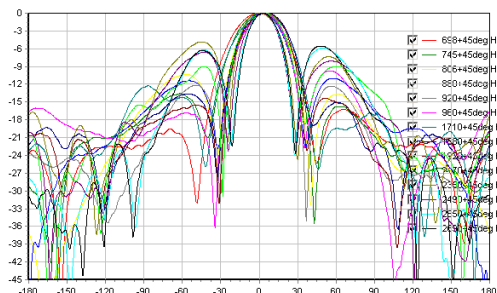
Port		Port1&Port2		
Frequency Range	MHz	698-960	1710-2170	2300-2700
Gain	dBi	10.5	11.0	11.0
Polarization		+/-45		
Beam-width	Horizontal	30	32	33
	Vertical	62	61	60
VSWR		≤ 1.8:1		
Front to back ratio	dB	24 (typ.)		
Isolation	dB	25		
PIM	dBc	≤ -150@2x43dBm		
Power Handling	W	200	100	
Impedance	Ω	50		

Mechanical Specifications

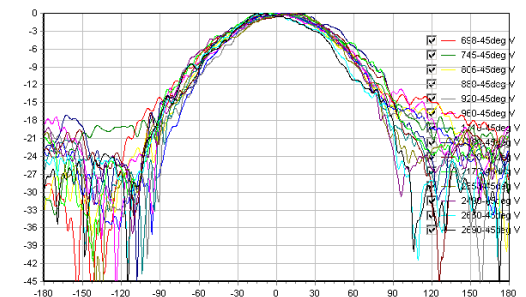
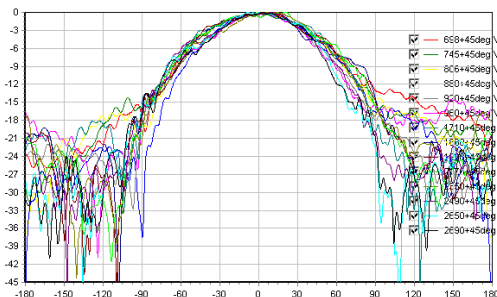
Dimensions, HxWxD	mm (in)	520x299x73 (20.5x11.8x2.9)		
Weight	kg (lb)	2.5 (5.5)		
Radome Material and Color		ABS with fiber, UV-resistant, white		
Reflector Material		Aluminum		
Radiating Element Material		Brass and PCB		
Connector Type		ODAG030X11-A1	ODAG030X11-A2	ODAG030X11-A3
Part Number for Connector Opt.		2 x N-F	2 x DIN-F	2 x 4.3-10-F
Mounting		Wall or Pole mount		
Mechanical Azimuth Adjustment	deg	± 60		
Mechanical Elevation Adjustment	deg	+60 to -30		
Environmental Class		Outdoor, IP67		
Operating Temperature	°C	-40 to +70		
Relative Humidity	%	≤ 100		
Shipping Dimensions, HxWxD	mm (in)	710x315x125 (28.0x12.4x4.9)		
Shipping Weight	kg (lb)	3.2 (7.1)		

Radiation Patterns

Horizontal
al
pattern



Vertical
pattern

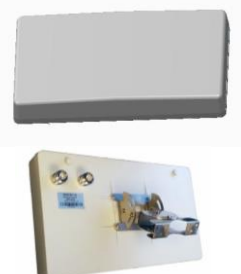


+ 45deg Port

-45deg Port

Features and Product Description

- Broadband, coverage for 698-960 / 1710-2170/2300-2700MHz of 2G/3G/LTE services for high capacity demand area like stadium and venue.
- Optional for 60/30deg H/V beam-width application by mounting after 90deg antenna rotation.
- 2 Screw Vents with ePTFE membrane as the breathing filters to meet ingress protection class IP67.
- Mounting kits included for antenna mechanical azimuth and elevation adjustments.

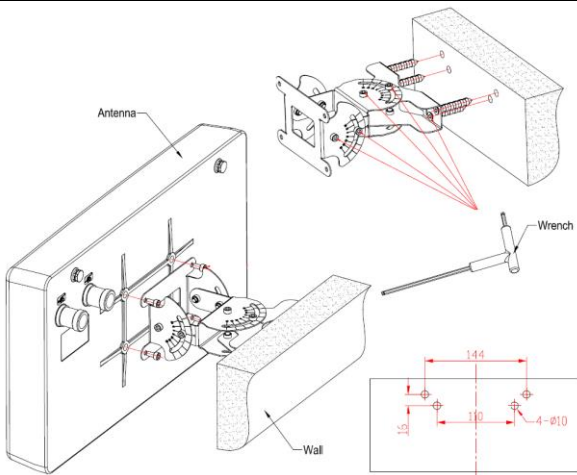


Note for Installation and Preparation

Thanks for choosing our product! Before exciting installation, please read this guide carefully.

- Make sure qualified personnel are hired for installing this product such as working at height with safety awareness, tools operating skills, and etc.
- Please check the items against the below packing list and make sure the product is in good condition without any damage and none is missing.
- Check the necessary installation tools below are prepared on site before the installation.
- Find proper position and the flat surface of wall or pole (**diameter 50-85mm**) to mount this antenna based on the coverage design and planning documents.
- Release the 4 **inner hexagon screws** on the antenna back and mount the **azimuth/elevation adjustment kits** securely on the back of antenna.

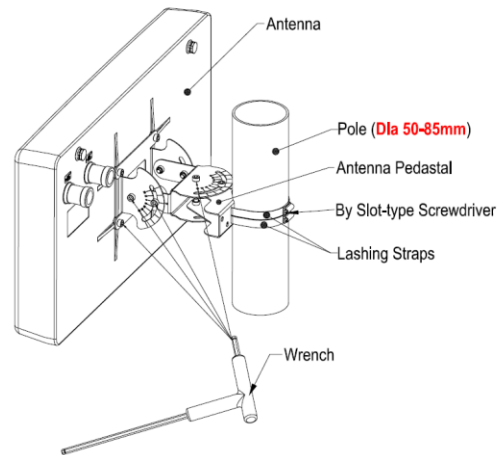
Wall Mounting Instruction



STEPS

- Drill 4 holes on the wall and tap the 4 **plastic plugs** into them.
- Screw the 4 **tapping screws** into the plastic plug and fix the whole antenna against on the wall.
- Adjust the antenna azimuth/elevation kits and fix the screws firmly.
- Joint the connectors with systems.

Pole Mounting Instruction



STEPS

- Put 2 **hold hoops** around the pole and though 2 slot holes on the back of bracket as shown.
- Drive the screws on the hold hoops till the antenna firmly fixed on the pole.
- Adjust the antenna azimuth/elevation kits and fix the screws firmly.
- Joint the connectors with systems.

Packing List

Antenna with 4 inner hexagon screws	1
Azimuth/elevation Adj. Mounting Kits	1
St 6.5*40 Tapping Screw	(for wall 4
10*50mm Plastic Plug	mount only) 4
Hold Hoop (for pole mount only)	2

List of Installation Tools

4mm Hexagon Wrench (Supplied)
Percussion Drill and Φ 10mm bit (for wall mount only)
Slot-type Screwdrivers (for pole mount only)

QC Check